

# SUNAIR® HAS THE RIGHT RETRACTABLE AWNING SYSTEM FOR YOU!



[www.SunairAwnings.com](http://www.SunairAwnings.com)



# EXPAND YOUR OUTDOOR LIVING SPACE and more...

A Sunair® retractable lateral arm awning is the ideal shading solution for decks and patios. They can be conveniently mounted on the wall, soffit or roof for additional headroom. With a simple hand crank or the convenience of an optional motor, your awning will instantly protect you and your family from the elements. On cloudy days or when not in use, your Sunair® awning is completely self-storing. It eliminates the need for seasonal removal and storage. With over 30 years of experience, SUNAIR® is the innovator in the industry. We have engineered the most durable arm systems, using the strongest materials and the most sophisticated arm design.

## ADD VALUE TO YOUR HOME:

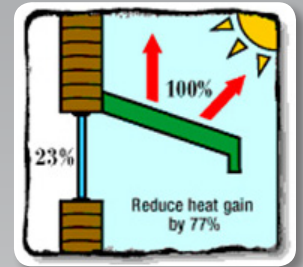
A SUNAIR® Lateral Arm Awning offers the ideal solution for creating a comfortable outdoor environment the whole family can enjoy. Imagine staying cool on your deck and protecting your family from the sun's harmful rays. Finally you can enjoy cookouts and entertaining the way it is meant to be with a Sunair® Retractable Awning.

## ENERGY SAVINGS:

You can reduce sunlight and glare through your windows by up to 94% and reduce heat gain by as much as 77%. Awnings can reduce cooling energy by as much as 17% in moderate climates. You can also reduce your utility bills.

## SUN PROTECTION:

A SUNAIR® awning provides you and your family with 99% UV protection, while also protecting furniture and carpeting from fading. Now you can enjoy the outdoors without worry.

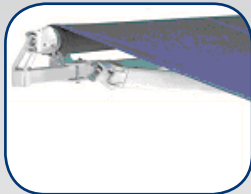
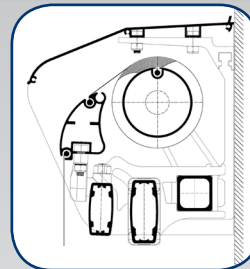
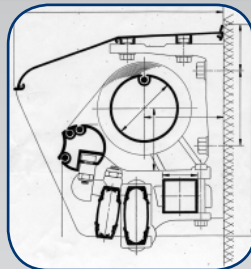
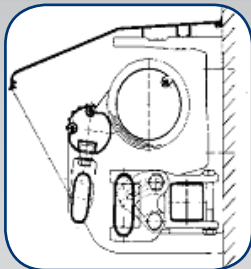


## Sunchoice®

## Sunstar®

## Sunair®

## Suntube®



- Economical lateral arm awning
- Double cable arm design
- Die- cast components
- 7:1 worm gear with stop
- Aluminum support and roller tube
- Motorized or manual
- 5yr year limited frame warranty
- Optional aluminum hood system
- Coated cable standard
- Frame colors: white, mocha

### Max Size:

24 ft. Wide  
10 ft. Projection

- Robust lateral arm awning
- Double cable arm design
- Forged elbow, shoulder and arm components
- 7:1 worm gear with stop
- Aluminum support and roller tube
- Motorized or manual
- 8yr year limited frame warranty
- Optional aluminum hood system
- Stainless steel cable standard
- Frame colors: white, mocha, and ivory

### Max Size:

24 ft. Wide  
11' 6" Projection

- Highest quality lateral arm awning
- Forged elbow, shoulder and arm components
- Double cable arm design
- 4:1 / 8:1 bevel gear with stop for most efficient operation
- Aluminum support and roller tube
- Motorized or manual
- 15yr year limited frame warranty
- Optional aluminum hood system
- Stainless steel cable standard
- \*available in all (9) frame colors and custom RAL Colors as well

(Inquire with Sunair)

Max Size: 35 ft. Wide  
14' Projection

(special order wider units)

- Highest quality lateral arm awning
- Double cable arm design
- Forged elbow, shoulder and arm components
- 4:1 / 8:1 bevel gear with stop for most efficient operation
- Aluminum support and roller tube
- Motorized or manual
- 15yr year limited frame warranty
- Semi-cassette enclosure
- Stainless steel cable standard
- \*available in all (9) frame colors and custom RAL Colors as well







(Inquire with Sunair)

Max Size:  
20 ft. Wide  
13' Projection

# Here is why the SUNAIR® awning is the best on the market

## SUNAIR® FEATURES

## SUNAIR® BENEFITS

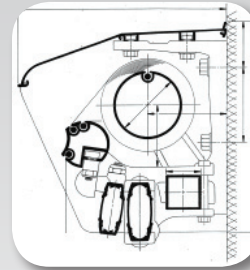
<b>ARMS</b>		All arm parts under stress are made of forged aluminum, including the shoulder, elbow, and arm components. All arms 8' 7" and above use three heavy duty steel springs.	Forged aluminum arm components are stronger than all die castings or extrusions, resulting in a stronger awning against the elements. Three heavy duty steel springs provide better arm tension and longer arm life.
<b>FLEXIBILITY</b>		Sunair® uses only the strongest materials, yet is engineered for flexibility with a unique two way movable front arm attachment.	Our unique two way movable front arm attachment relieves strain and increases flexibility and strength in the arm, which reduces wind damage.
<b>ELBOW</b>		The Sunair® uses twin, stainless, high quality aircraft cable. The hinge is triple angled with an elliptical cable radius.	Twin cables are far superior to a single cable, because cable wear is reduced, allowing better arm and fabric tension. The elliptical cable radius increases tension as the awning extends. These angles help keep the fabric from dragging on the arms.
<b>PROFILES &amp; PAINT</b>		All extrusions and components are exclusively made of the highest quality aluminum. The parts are first chromate treated and then electro statically powder coated.	Aluminum extrusions are strong, yet will not corrode over time like steel. This equates to a longer lasting awning. Chromating gives better powder adhesion and holds up better against the elements, resisting cracking and peeling.
<b>GEARS</b>		Manually operated Sunair® units use a heavy duty 4:1 ratio bevel gear with a stop. A 8:1 gear is used on larger widths.	The 4:1 gear is the most efficient gear made. This gear minimizes the time and effort needed in operating a manual awning. The stop eliminates fabric damage due to over rolling.
<b>THREAD</b>		All fabrics are sewn with Tenara® thread. This thread is manufactured from GORE-Tex and is clear, making it nearly invisible.	Tenara® thread is made of Teflon and will not deteriorate from exposure to the elements. The clear thread is nearly invisible on most fabric colors.

## FABRICS

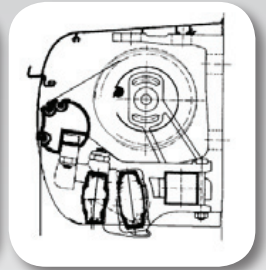
Choose from our exclusive PARA Tempotest® fabric collection. Hundreds of premium grade solid and striped 100% acrylic fabric colors are available to choose from. You will find a fabric to suit your needs and taste. Acrylic fabric is more attractive and breathes better than other fabrics. Acrylic fabric is also resistant to fading and mildew, and has a water repellent Teflon coating. Other fabrics are also available.



## HOOD OPTIONS



Standard Hood



Decora Hood



# SUNAIR®

AWNINGS & SOLAR SCREENS



SUNPROOFING  
AMERICA!™



# MOTORS

By motorizing your Sunair® awning you can extend and retract your awning effortlessly. In fact, motorizing your awning will increase your usage of the product and overall satisfaction. The motors also do not require any maintenance. With a flick of a switch or remote, the awning will extend or retract automatically. A standard wall switch or RTS remote control is available with the optional SOMFY Plug-In motors, eliminating the need for an electrician.



Sunis Sun Sensor



SOMFY MOTORS feature an integrated radio receiver that allows you to operate the awning by remote. With the optional SUNIS sun sensor and EOLIS wire free motion/wind sensor the awning automatically extends and retracts with the sun's intensity and exposure to excessive wind.



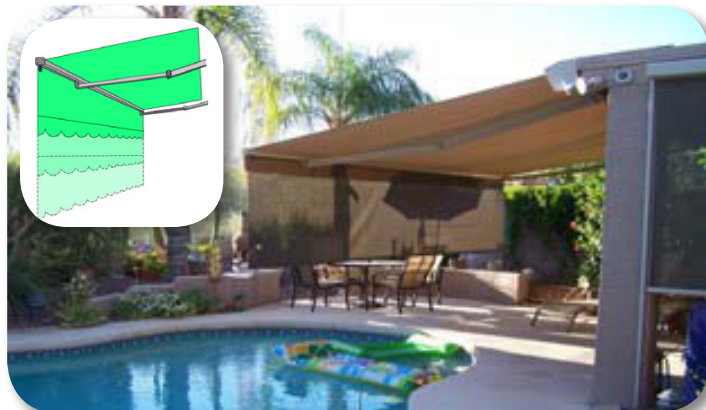
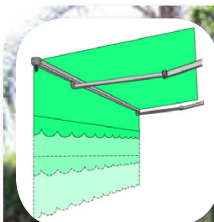
Standard Switch



Remote Control

# VALANCE PLUS

Is an optional roll down drop valance. This valance is great for extra shade on western exposures when the sun is low on the horizon. Acrylic or mesh fabrics are available for the Valance Plus, as well as manual or motorized control.



# FRAME COLORS



CUSTOM COLORS ARE AVAILABLE



**SUNPROOFING AMERICA!™**

**SOLTIS 86**  
SOLAR PROTECTION

**MERMET**

# OPTIONS

## SUNAIR® XP CROSSOVER ARMS

Sometimes the area on the wall to mount the awning is very narrow, yet a larger projection is desired. The Sunair® XP offers the ability to overlap the arms in order to fit larger projection arms onto a narrow frame. This cross-arm version is available when the desired projection exceeds the width.



Call Us for a FREE in-home estimate!



AUTHORIZED DEALER:

[www.SunairAwnings.com](http://www.SunairAwnings.com)

Sunair® reserves the right to change engineering without notice ©2012 Sunair® Awnings & Screens.

Sunair® Awnings, 7785 Rt. 175 Jessup, MD 20794  
©2012 Awnings Unlimited Inc.  
Jessup, MD 410.799.1145 Phoenix, AZ